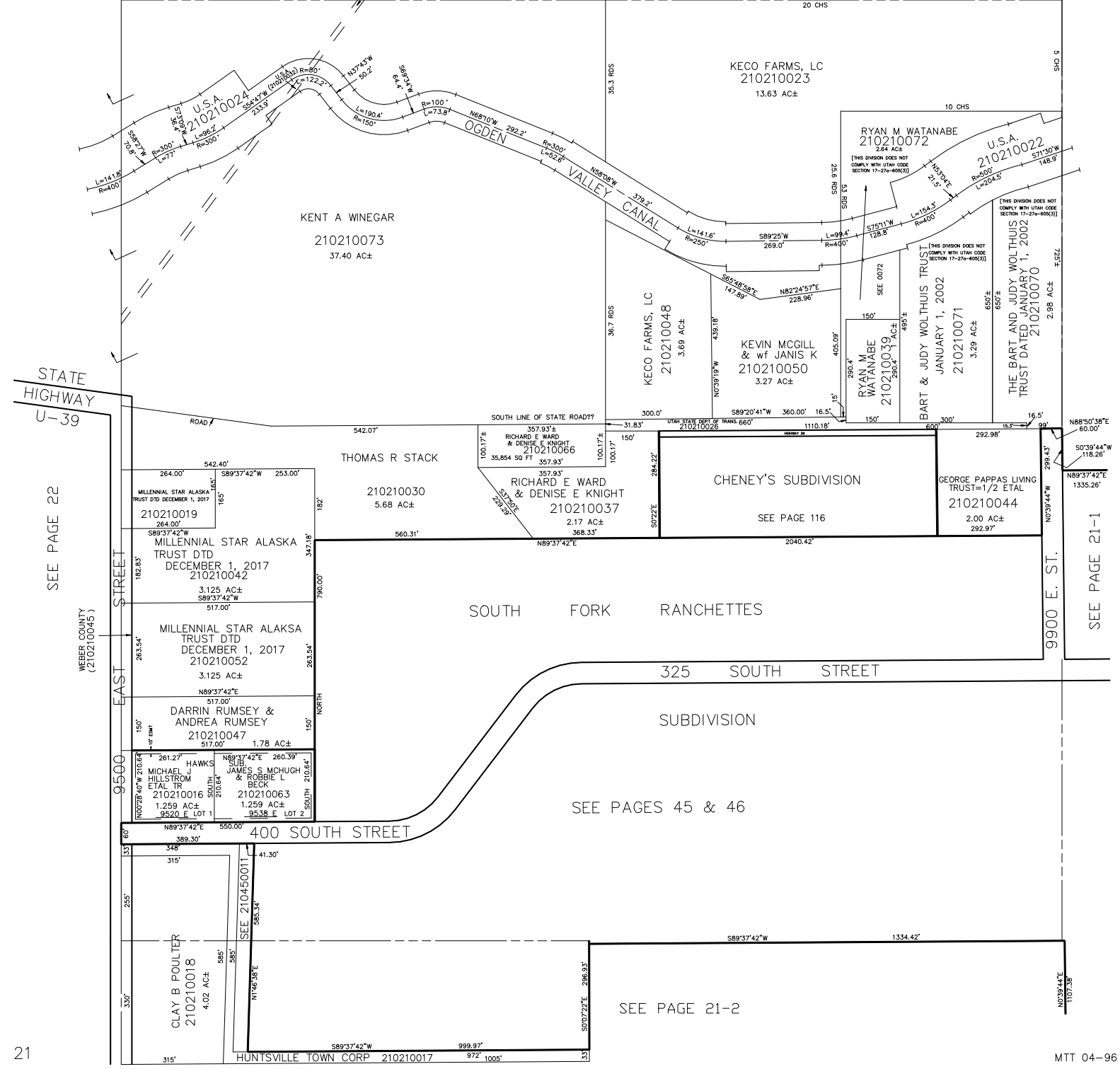


N.W. 1/4
SECTION 15, T.6N., R.2E., S.L.B. & M.
IN WEBER COUNTY
SCALE 1" = 200'

TAXING UNIT: 520

MIDDLETON WATER
WORKS ASSOC
210210031

SEE PAGE 12



SEE PAGE 22

WEBER COUNTY
(210210045)

9500 EAST STREET

MILLENNIAL STAR ALASKA TRUST DTD DECEMBER 1, 2017
210210019
264.00'±
S89°37'42"W
517.00'

MILLENNIAL STAR ALASKA TRUST DTD DECEMBER 1, 2017
210210042
3.125 AC±
S89°37'42"W
517.00'

MILLENNIAL STAR ALASKA TRUST DTD DECEMBER 1, 2017
210210052
3.125 AC±
N89°37'42"E
517.00'

DARRIN RUMSEY & ANDREA RUMSEY
210210047
1.78 AC±
517.00'

HAWKS
MICHAEL J HILLSTROM ETAL TR
210210016
1.259 AC±
SOUTH LOT 1

HAWKS
JAMES S MCHUGH & ROBBIE L BECK
210210063
1.259 AC±
SOUTH LOT 2

THOMAS R STACK
210210030
5.68 AC±
560.31'

RICHARD E WARD & DENISE E KNIGHT
210210066
35.854 SQ FT
357.93'

RICHARD E WARD & DENISE E KNIGHT
210210037
2.17 AC±
368.33'

KECO FARMS, LC
210210023
13.63 AC±

KECO FARMS, LC
210210048
3.69 AC±

KEVIN MCGILL & wf JANIS K
210210050
3.27 AC±

CHENEY'S SUBDIVISION
SEE PAGE 116

RYAN M WATANABE
210210072
2.64 AC±
[THIS DIVISION DOES NOT COMPLY WITH UTAH CODE SECTION 17-27a-406(3)]

RYAN M WATANABE
210210039
2.80 AC±
[THIS DIVISION DOES NOT COMPLY WITH UTAH CODE SECTION 17-27a-406(3)]

BART & JUDY WOLTHUIS TRUST
JANUARY 1, 2002
210210071
3.29 AC±
650'±

THE BART AND JUDY WOLTHUIS TRUST DATED JANUARY 1, 2002
210210070
2.98 AC±
650'±

GEORGE PAPPAS LIVING TRUST=1/2 ETAL
210210044
2.00 AC±
292.97'

SOUTH FORK RANCHETTES

SUBDIVISION

SEE PAGES 45 & 46

SEE PAGE 21-2